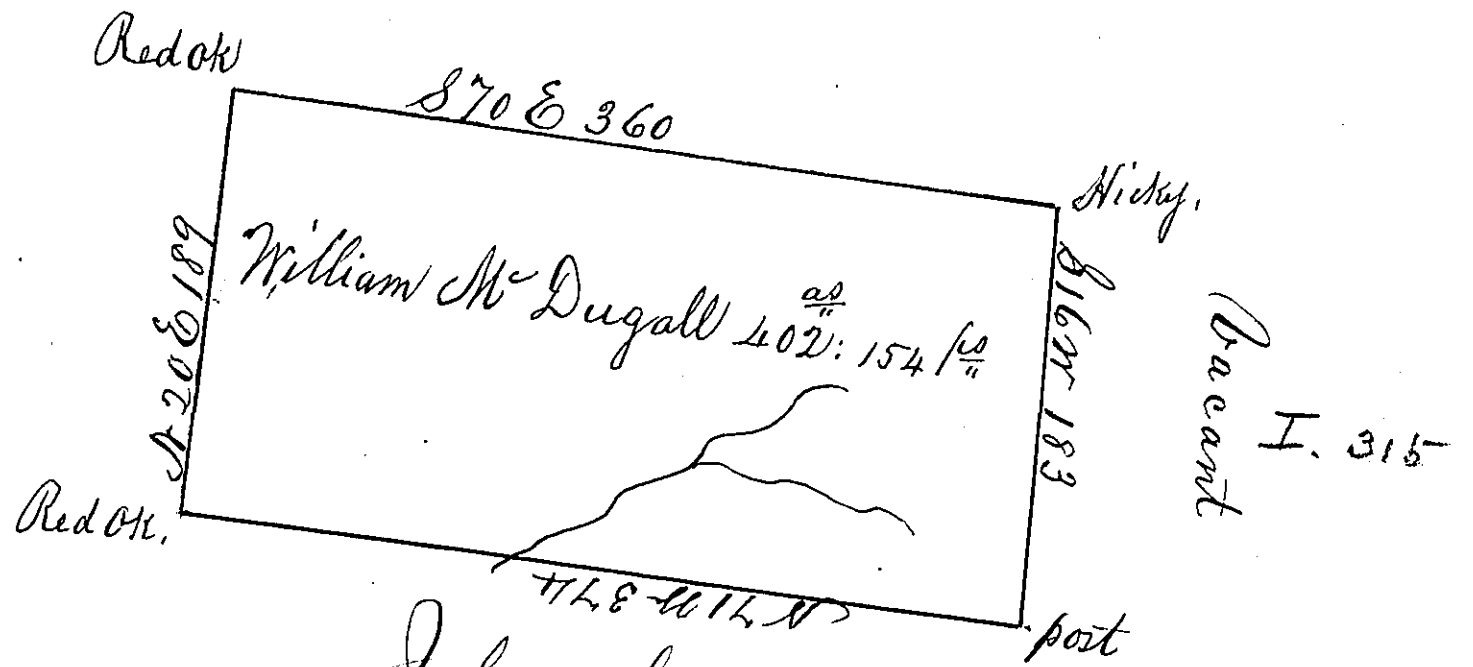


Vacant Land



John Grays land
Page 79

Situate on the Head easterly branches of the Clearfield
Creek on the West side of Alleghenia Mountain about a
mile and a half North of the New State road laid out &
confirmed between the navigable waters of the Frankstown
Branch of Juniata River & the Navigable Waters on the
River Conemaugh in Frankstown Township, Huntingdon
Containing 427: 83 1/2 and the usual allowance of
Six per Cent for roads. Surveyed the 23^d day
of June 1788 in pursuance of a warrant dated
the 20th day of December 1784.

To John Lukens Esq. }
S. G. } John Canaw
D.S.

IN TESTIMONY that the above is a copy of the original remaining on file in the
Department of Internal Affairs of Pennsylvania, made con-
formably to an Act of Assembly approved the 16th day of
February, 1833, I have hereunto set my Hand and caused
the Seal of said Department to be affixed at Harrisburg, this

Eighteenth day of September 1864.

J. Simpson Africa,
Secretary of Internal Affairs.